

# Command Recording Software

Video Management Software (VMS)  
for Windows® (up to 500 cameras and  
500 Mbps)



March Networks® **Command™ Recording Software** is the powerhouse behind the scenes that enables the efficient recording, storage, and retrieval of video for all of your organization's cameras and transaction data. A host of advanced features, e.g., a configuration wizard, statistics dashboards, and automatic failover, help to insure an easy setup, intuitive health reporting, and a fault-tolerant system.

The Windows®-based recording software runs on a variety of platforms — from a small independent workstation, to a March Networks recorder, to a commercial off-the-shelf server (up to 500 cameras per server), to a large-scale virtual machine — depending on your application.

You can also order your Command Recording Software (along with the Windows operating system) pre-installed and pre-tested on a server, certified for plug-and-play operation and optimum performance out-of-the-box.

*Check out **Command Recording Software Lite!** Downloadable directly from the March Networks website, this free trial version of Command Recording Software installs in minutes without any complex system setup. The software supports up to six channels of video and one week of recording, and it shares the same easy-to-use interface that distinguishes all Command software.*

## Key Benefits

- ▼ **Flexible camera licensing.** Pay for only the number of channels you need, with the ability to expand to 500 channels as your business grows and your needs change.
- ▼ **Configuration wizard.** Quickly configure the basic recording functionalities (e.g., cameras, storage, recording, and user profiles) in just six steps.
- ▼ **Shadow Archiving.** In the event a network connection is interrupted, Command uses the recorded video from the camera's internal SD card, and re-integrates that video into the right spot on the server when the network connection is re-established.
- ▼ **Statistics dashboards.** Access useful charts and data related to system performance, recording performance, and ingress/egress bitrate. The data can be exported to an excel file and the charts can be downloaded for offline viewing.
- ▼ **Health monitoring.** Get email notifications of health-related issues, even in an unmanaged environment.
- ▼ **External recording options.** Simultaneous internal and external recording ensures your video and data are always safe. Choose from DAS, NAS, or SAN to increase the stability and reliability of your system.
- ▼ **High Availability.** If a server's recording is interrupted, recording automatically switches to a standby server in less than 30 seconds. Video from that standby server will be transferred back to the primary server, either instantly or on a schedule.
- ▼ **Get a complete view of your business.** Supplement your surveillance video with March Networks Searcglight (TM) Software and the Brickstream (TM) Analytics Sensor. This further enhances your evidence by incorporating powerful business analytics (e.g., people counting, queue length, and wait times), and ancillary data (e.g., POS, ATM, teller and RFID).

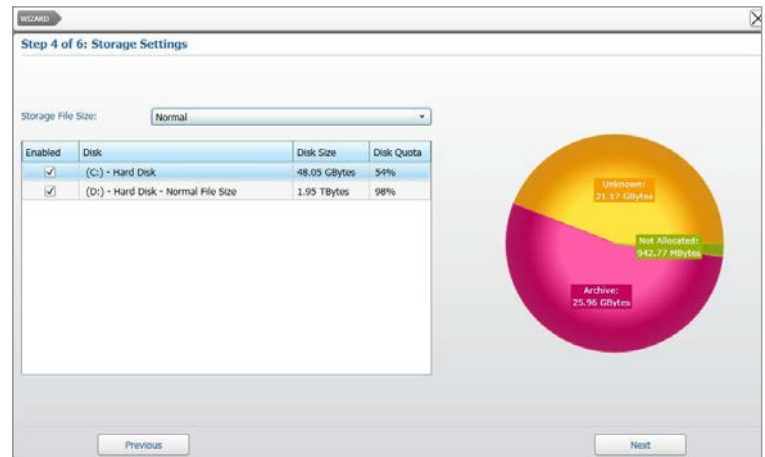
***Record, store, retrieve, and manage  
video evidence for up to 500 cameras.***



## Configure basic functions in six easy steps

The configuration wizard is an intuitive tool that allows you to quickly configure the basic functionalities of your Command Recording Software in just six steps. No training or user manual required...the wizard guides you through the process so you're able to record, stream live video, and play back archived video evidence in minutes.

- Specify the system name and change the administrator password
- Add IP video channels
- Enable/disable the cameras, and specify video settings
- Add storage disks and configure archive settings
- Configure recording settings (continuous and programmed recording)
- Create and customize local user profiles



*Use the Configuration Wizard to add the system disks (including external USB drives) for video storage*

## Infrastructure-friendly storage and management

The software is equipped with a myriad of built-in features to help maximize overall system performance, including the ability to manually select parameters that significantly save on storage space, use less bandwidth, and cut CPU usage.

- ▼ **Bandwidth limiting.** The software regulates traffic and minimizes congestion by allowing you to control the amount of bandwidth uploaded to and from the server or recorder. These limitations can be imposed according to camera and system user.
- ▼ **Maximum retention settings.** You can specify policies for how long a drive will store video before that video is overwritten, for example 30 days. By putting limits on the maximum retention time, you can insure you are compliant with your recording and retention policies.
- ▼ **Multi-sector archiving.** Save storage space and preserve video quality where it's needed most. Accommodate different recording conditions on different sectors, and select the parameters required for specific scenarios. For example, sector one could have a group of cameras recording 24/7 at low resolution with 90 days' worth of retention, while sector two could have a group of cameras recording for 30 days at high-res, but only when motion is detected.
- ▼ **Selective video recording.** Instead of continuously recording video from all cameras 24 hours a day, seven days a week, you can restrict the amount of video being recorded and stored. For example, you can indicate the specific dates and times you want to record. Or you can record only when an event happens. Additionally, you can specify pre- and post-recording parameters.
- ▼ **Video removal.** If you no longer need a specific part of the archived video evidence, or need to purge it for legal reasons, you can delete all video evidence recorded in the specified time interval and free up storage space.



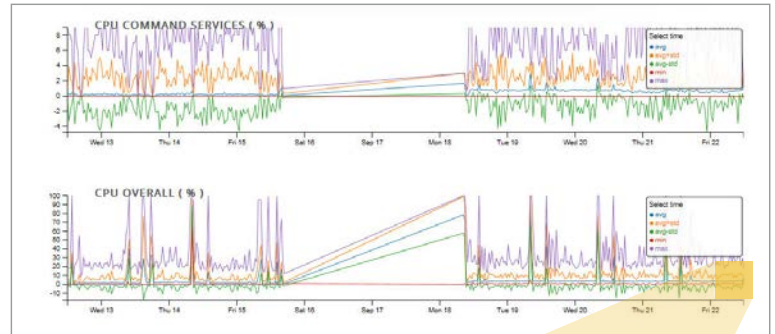
## Assess your system's performance at-a-glance

You've configured your cameras to stream at .5 Mbps, but the bitrate is now mysteriously at 2 Mbps. Is this because there's more activity in the scene? Is the bitrate spiking during the day, then going back down at night? Or is the bitrate slowly creeping up, which can sometimes happen with older cameras, and perhaps you need to automatically initiate a camera reboot once a month?

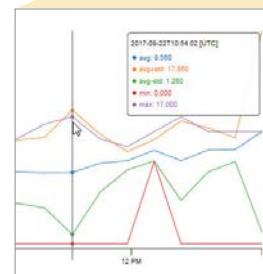
The statistics dashboards provide comprehensive data on things like system performance, recording performance, and ingress/egress bitrate, presented in easy-to-read, color-coded charts and graphs.

The ability to evaluate this data over the last 30 days allows you to uncover trends and potentially pinpoint root causes before technical support needs to intervene.

- Scroll through, and zoom in on, a chart to get a more granular look
- Modify a chart's scale
- Export the data to an excel file
- Download the charts for offline reviewing
- Send data to technical support for quicker resolution



Sample dashboard showing statistics about CPU usage



Move the mouse on the chart to display the values corresponding to the cursor position

## Customizable user interface based on job responsibility

Each system user has a profile that defines that user's system access rights. This means that each person in your organization has access to only what's required for their job, without being distracted by additional functionality they will never use.

### Profile List

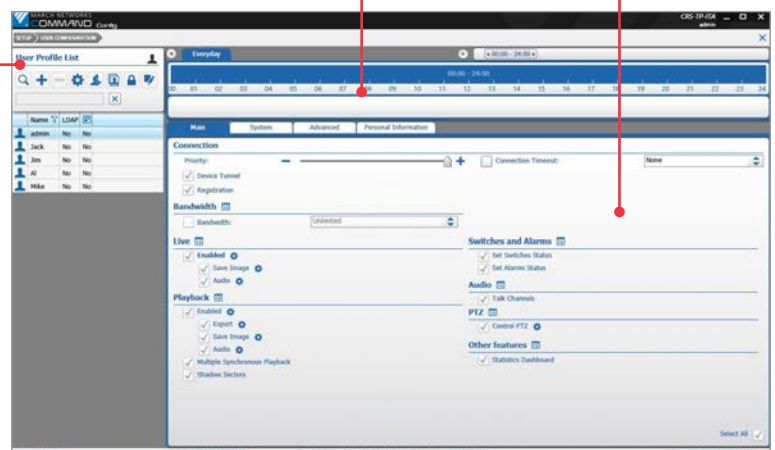
- Create, remove, duplicate and filter user profiles
- Duplicate Command Client user preferences
- Configure extended login features for a user profile

### Scheduler

Set user permissions based on day and time intervals.

### Settings Panel

Assign a variety of permissions to each user or groups of users



Create local users, import users from the LDAP service, or import groups of users from the LDAP service. Then assign permissions and schedules to user profiles.

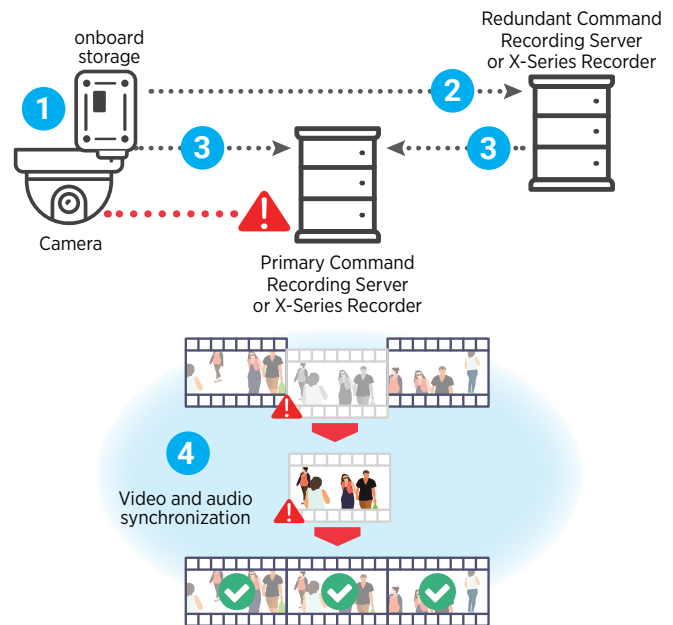


## Complete fault tolerance minimizes risk of losing video

Your video will always be available, even when your network and/or your server aren't. Command's innovative Shadow Archive feature allows for seamless access to recorded video for total fail-safe management. Here's how it works.

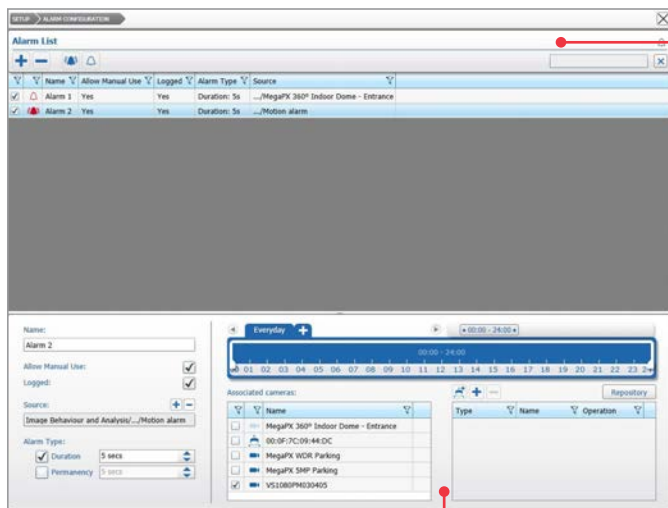
If the primary Command Recording Server or X-Series recorder goes down, backup recording immediately kicks in, in one of two ways:

- 1 The camera can automatically record to its internal storage. **OR**
- 2 The redundant Command Recording Server/Recorder can start recording in place of the offline server.
- 3 When the primary Command Recording Server/Recorder comes back online, the video is transferred back to it, from either the camera or the redundant server.
- 4 That "missing" video and audio are reintegrated into the recorded video in the exact appropriate spot.



## Sophisticated alarm and event configuration

You can create and customize alarms using a variety of parameters, e.g., motion, schedule, analytics, or combinations of multiple parameters. You can also select which cameras are triggered after an alarm/event, launch PTZ actions, and automatically send email notifications. These powerful and customizable alarm policies, which include pre- and post-alarm recording, can be programmed even in an unmanaged environment (no Command Enterprise Software required).



### Alarm List Panel

- Create, filter, select and turn on/off the available alarms
- Create alarms based on any condition in the condition tree

The Alarm Configuration page allows you to create and customize alarms.

**Settings Panel** — Manage and configure the available alarms and their schedules

## Additional benefits of Command Recording Software

More features that will improve your surveillance capabilities, save you time, and simplify your video system management...

- Local control eliminates the need for a separate PC to view your video (Command Recording Software and Command Client can be loaded onto the same server).
- Synchronized audio recording lets you hear, in addition to see, what happened in the scene.
- Privacy masks allow you to block out certain areas of the camera's field of view, while the areas of interest remain clearly visible.
- The software is compatible with any ONVIF Profile S third-party camera, and many of the IP cameras you're already using. A list of the [IP cameras](#) that integrate with Command Recording Software is available on our website.
- To ensure that third-party investigators and law enforcement can review evidence, the Command Player can be automatically included when evidence files are exported.

**The Command Recording Software application requires a dedicated server or Virtual Machine. For recommended system requirements, please visit [marchnetworks.com/system-requirements/](http://marchnetworks.com/system-requirements/)**

North America ..... 1 800 563 5564  
 Latin America ..... +5255 5259 9511  
 Europe ..... +39 0362 17935  
 Asia ..... +65 6818 0963  
 Australia and New Zealand ..... +61 1300 089 419  
 Middle East and Africa ..... +971 4 399 5525

© 2021 March Networks. All rights reserved. Information in this document is subject to change without notice. MARCH NETWORKS, March Networks Command, March Networks Searchlight, March Networks RideSafe, and the MARCH NETWORKS logo are trademarks of March Networks Corporation. All other trademarks are the property of their respective owners. 060-3370-00-C [marchnetworks.com](http://marchnetworks.com)

