

Evolution 12

360° Stainless Steel Cameras

The next step in 360° total situational awareness

12MP high-resolution sensor

- Up to 30 fps at 2.0 MP
- 0.1 lux minimum illumination
- Constant 360° surveillance with no blind spots
- No moving parts, no maintenance and silent operation
- PoE or 12 VDC powered
- 5-years warranty

Advanced features

- Local SD card slot for event recording
- Configurable privacy regions
- Region-based motion detection
- Local alarm digital input and output
- Audio microphone input

Uniquely suited for demanding environments

- Electropolished marine grade 316 stainless steel
- Withstands high pressure washes and corrosion
- IP66, IP67, IP68, IP69K and NEMA Type 4X & 6P rated for dust and water protection
- IK10+ rated for vandalism protection
- Certified by NSF to NSF/ANSI Standard 169
- HCV EU marked for HACCP environments
- Surface and pendant mounting options available with matching stainless steel accessories

Applications

- Food and processing areas
- Industrial and chemical plants
- Vehicle wash stations
- Ports and marine applications
- High end architecture



37913-101



Recording and Playback

- Market leading Oncam 3D dewarping software
- Full live and retrospective dewarping available
- Recording and Playback
- Simultaneous multiple video streams
- Digital zoom capability through client-side dewarping
- H.264 / MJPEG streaming with multiple quality levels
- Optimizes bandwidth and storage utilization
- Intuitive web-based interface for viewing and configuration
- ONVIF profile S conformant

Evolution 12

360° Stainless Steel Camera

The next step in 360° total situational awareness

General

| | |
|---------------------------|--|
| Lens Field of View | 180° Horizontal, 180° Vertical |
| Image Sensor | 12.4 MP, 4072 H x 3046 V pixels and 1/2.3-inch Sony CMOS Sensor |
| Lens | 185° / F2.0 |
| Minimum Illumination | 0.1 lux = 50 IRE F/2.0 |
| Frame Rate | 30 fps for 2MP and ¼ MP resolution 14 fps for 6, and 4 MP resolution 12 fps for 9.6MP resolution |
| Video Motion Detection | 8 configurable regions |
| External Input | 1x contact input |
| External Output | 1x contact output |
| Security | Configurable password protection |
| Advanced Event Management | Triggered by motion, external input or HTTP event, result configurable, external output, FTP/SFTP upload and local recording |
| Networking | TCP/IP, HTTP, DHCP, DNS, NTP, FTP, SMTP and RSTP |
| Privacy | 10 configurable privacy regions |
| SD Card | Built-in SD card slot. Supports cards up to 128 GB capacity. Speed class 10 or higher required. |
| Audio Connections | Audio In through 3.5 mm jack, RTSP using G711 codec or ONVIF S |
| Audio Input Level | Mic input level range is approximately 5 mV to 50 mV |
| Analog Video Out | Test port for production, not available in normal operation |
| White Balance Range | Auto White Balance (Range = approximately 2500 K - 8000 K) |

Video

| | |
|--|---|
| Video Stream 1 Codec | H.264 in 9.6 MP, 6 MP, 4 MP, 2 MP |
| Video Stream 1 Compression Level | Multi-levels of compression and frame rate adjustment |
| Video Stream 1 Pixel Resolution | Fisheyes at: 9.6 MP (3200 x 3000), 6 MP (2528 x 2376), 4 MP (2080 x 1960), 2 MP (1472 x 1384) |
| Video Stream 2 Codec | H.264 in ¼ MP |
| Video Stream 2 Compression Level | Multi-levels of compression and frame rate adjustment |
| Video Stream 2 Pixel Resolution | Fisheyes at: ¼ MP (544 x 512) |
| Video Stream 3 Codec | MJPEG at ¼ MP |
| Video Stream 3 Compression Level | Multi-levels of compression and frame rate adjustment |
| Video Stream 3 Pixel Resolution | Fisheyes at: ¼ MP (544 x 512) |
| * VCam Stream 4, 5, 6, 7 Codec | H.264 |
| * VCam Stream 4, 5, 6, 7 Compression Level | Multi-levels of compression and frame rate adjustment |
| * VCam Stream 4, 5, 6, 7 Pixel Resolution | 4x independent onboard dewarped VCams at 1 MP (1280 x 720), ¼ MP (640 x 480) |
| Maximum Frame Rate | 30 fps |
| Image Control | Settings: brightness / contrast / saturation / exposure compensation, compression quality and wall / ceiling / table mount |
| Image Enhancement | Electronic WDR 60dB |
| PTZ Functionality | 10x zoom with Oncam 3D client-side dewarping software |
| Web Browser Compatibility | Internet Explorer 9, Edge 25, Firefox 23 and Chrome 29 or above. Plug-in required for full functionality |
| Unicast | Up to 20 simultaneous users depending on the resolution settings |
| Multicast | Supported for H.264 main camera stream |
| Bit Rate Control | Constant Bit Rate Control and Constant Quality Control |

* Video Stream 2 and VCams cannot be used simultaneously.

Evolution 12

360° Stainless Steel Camera

The next step in 360° total situational awareness

Electrical

| | |
|-----------------------------|--|
| Ports | RJ45 for 1000BASE-TX 2.1mm DC Input jack 6-pin 1.5mm Phoenix for external I/O BNC for test video output |
| Network Cable Type | CAT5E or better for 1000BASE-TX |
| Power Input | 12 VDC, 1.0 A (min) LPS or NEC Class 2 power supply or Power over Ethernet (PoE), IEEE standard 802.3af |
| Power Consumption (maximum) | 8.4 W (PoE 48 VDC) / 7.32 W (DC 12 VDC) |

Mechanical

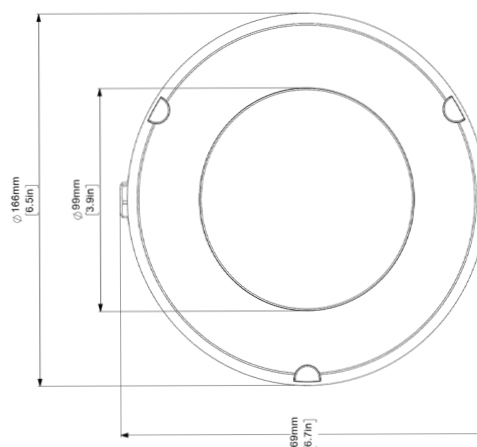
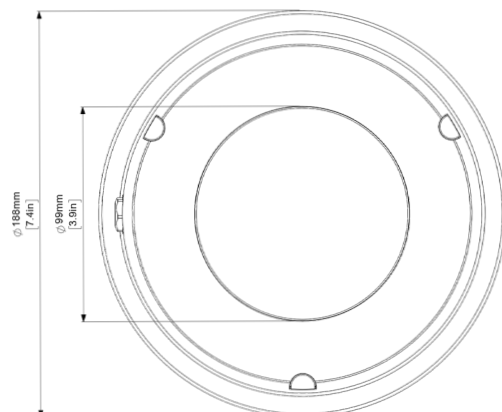
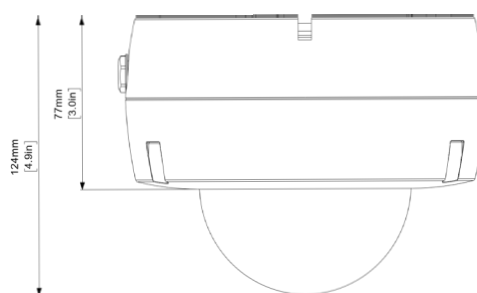
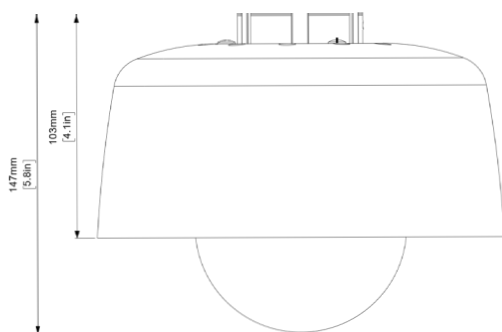
| | | |
|---------------------------|---------|--|
| Camera Mount | | Surface or Pendant mount |
| Weight | Surface | 5.11kg (11.27lbs) |
| | Pendant | 5.9kg (13.00 lbs) |
| Dimensions (D x W x H) | Surface | 124 x 166 x 169 mm (4.9x 6.5 x 6.7 in.) |
| | Pendant | 147 x 188 x 188 mm (5.8 x 7.4 x 7.4 in.) |
| Housing Material | | Electropolished marine grade 316 stainless steel with polymer bubble |

Environmental

| | |
|-----------------------------|---|
| Operating Temperature Range | -40 to +55°C (-40 to +131°F) |
| Ingress Protection | IP66, IP67, IP68 (2m, 30mins), IP69K, NEMA Type 4X & 6P |
| Impact Resistance | IK10+ |
| Food Safety and Hygiene | NSF/ANSI Standard 169, HCV EU |

Certifications

IEEE802.3af, CE, AS/NZS CISPR 32:2015/COR1:2016, CISPR 24:2010 (Class A),
FCC, ICES-003, UL 60950-1(ed.2), CAN/CSA C22.2 No. 60950-1-07,
RoHS, REACH, IP66, IP67, IP68, IP69K, IK10+, NSF/ANSI Standard 169, HCV EU, NEMA Type 4X & 6P



Evolution 12

360° Stainless Steel Camera

The next step in 360° total situational awareness

Accessories

Surface Mounting

Surface Mounting Option

Stainless Steel Conduit Adaptor

37968
Weight 0.240kg
(0.53 lb)



Pendant Mounting

Stainless Steel Pendant Mount Adaptor

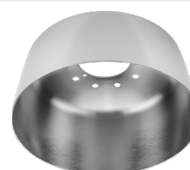
37970
Weight 0.225kg
(0.495 lb)



Pendant Mounting Options

Stainless Steel Environmental Shield

37969
Weight 0.570kg
(1.26 lb)



Stainless Steel Pendant Arm

37971
Weight 2.065kg
(4.55 lb)



Stainless Steel Pendant Arm Corner Mount

37973*
Weight 1.655kg
(3.65 lb)



* Stainless Steel Pendant Arm (37971) Required

Stainless Steel Pendant Arm Pole Mount

37972*
Weight 0.890kg
(1.96 lb)



* Stainless Steel Pendant Arm (37971) Required

Stainless Steel Pipe Thread Adaptor

37974
Weight 0.360kg
(0.79 lb)



© Copyright 2020 ONVU Technologies AG. All rights reserved. Oncam is a trading name of ONVU Technologies AG. Specifications and configurations subject to change without notice. "ONCAM" and the "ONCAM logo" are trademarks, and in some cases registered or protected trademarks, of Oncam Global Limited and/or Oncam Global, Inc., including under registration in the UK, India and in the U.S. Patent and Trademark Office. All other trademarks are the property of their respective owners.

North America 1 800 563 5564
Latin America +5255 5259 9511
Europe +39 0362 17935
Asia +65 6818 0963
Australia and New Zealand +61 1300 089 419
Middle East and Africa +971 4 399 5525

© 2020 March Networks. All rights reserved. Information in this document is subject to change without notice. MARCH NETWORKS, March Networks Command, March Networks Searchlight, March Networks RideSafe, and the MARCH NETWORKS logo are trademarks of March Networks Corporation. All other trademarks are the property of their respective owners. 060-3401-00-C
marchnetworks.com

