

Command Recording Software Lite

Free trial Video Management Software (VMS) for up to 6 cameras



March Networks® **Command™ Recording Software Lite** enables the efficient recording, storage, and retrieval of video for an organization's cameras and transaction data.

Downloadable directly from the March Networks website, this free trial version of Command Recording Software installs in minutes without any complex system setup. The software supports up to six channels of video and one week of recording, and it shares the same easy-to-use interface that distinguishes all Command software.

The software is compatible with any ONVIF Profile S third-party camera, and many of the IP cameras you're already using. A list of the [IP cameras](#) that integrate with Command Recording Software is available on our website.

Key Benefits

- ▼ **Configuration wizard.** Quickly configure the basic recording functionalities (e.g., cameras, storage, recording, and user profiles) in just six steps.
- ▼ **Shadow Archiving.** In the event a network connection is interrupted, Command uses the recorded video from the camera's internal SD card, and re-integrates that video into the right spot on the server when the network connection is re-established.
- ▼ **External recording options.** Simultaneous internal and external recording ensures your video and data are always safe. Choose from Direct-Attached Storage (DAS), Network-Attached Storage (NAS), or Storage Area Network (SAN) to increase the stability and reliability of your system.
- ▼ **Exportable player.** To ensure that third-party investigators and law enforcement can review evidence, the Command Player can be automatically included when evidence files are exported.
- ▼ **Local control.** No need for a separate PC to view your video (Command Recording Software Lite and Command Client can be loaded onto the same server).
- ▼ **Synchronized audio recording.** Hear, in addition to see, what happened in the scene.
- ▼ **Privacy masks.** Block out certain areas of the camera's field of view, while the areas of interest remain clearly visible.

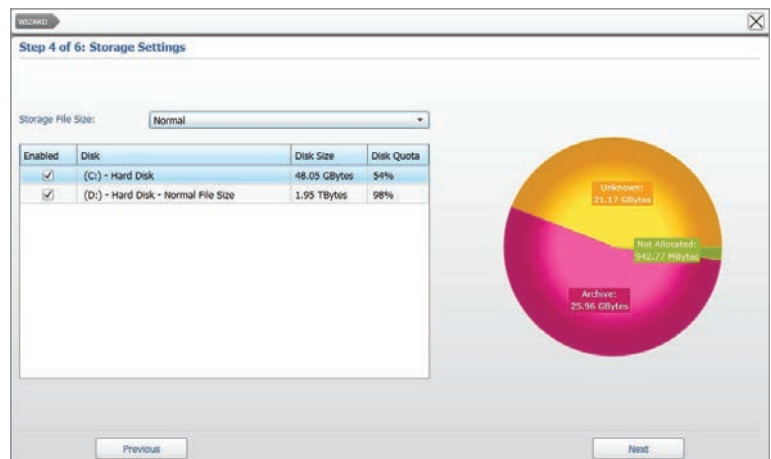
Record, store, retrieve, and manage video evidence for up to six cameras.



Configure basic functions in six easy steps

The configuration wizard is an intuitive tool that allows you to quickly configure the basic functionalities of your Command Recording Software in just six steps. No training or user manual required...the wizard guides you through the process so you're able to record, stream live video, and play back archived video evidence in minutes.

- Specify the system name and change the administrator password
- Add IP video channels
- Enable/disable the cameras, and specify video settings
- Add storage disks and configure archive settings
- Configure recording settings (continuous and programmed recording)
- Create and customize local user profiles



Use the Configuration Wizard to add the system disks (including external USB drives) for video storage

Customizable user interface based on job responsibility

Each system user has a profile that defines that user's system access rights. This means that each person in your organization has access to only what's required for their job, without being distracted by additional functionality they will never use.

Profile List

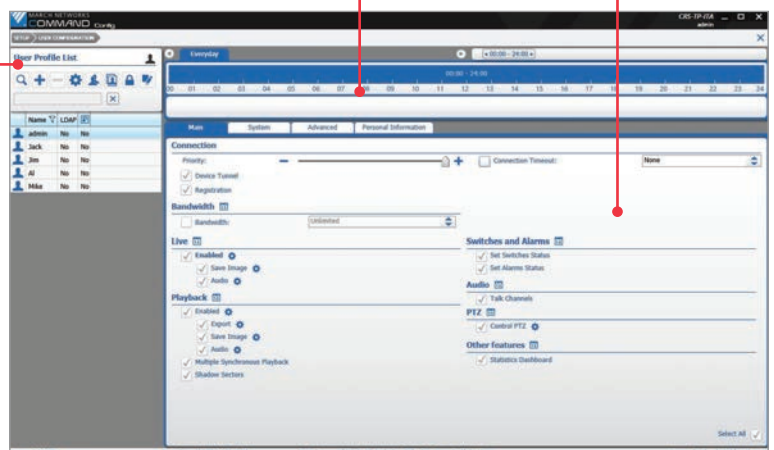
- Create, remove, duplicate and filter user profiles
- Duplicate Command Client user preferences
- Configure extended login features for a user profile

Scheduler

Set user permissions based on day and time intervals.

Settings Panel

Assign a variety of permissions to each user or groups of users



Create local users, then assign permissions and schedules to user profiles.

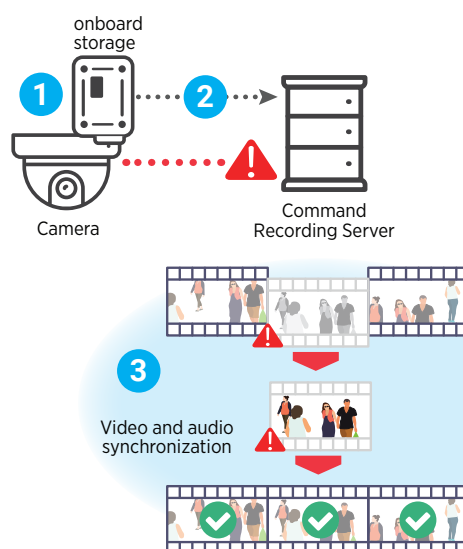


Complete fault tolerance minimizes risk of losing video

Your video will always be available, even when your network and/or your server aren't. Command's innovative Shadow Archive feature allows for seamless access to recorded video for fail-safe management. Here's how it works.

If the Command Recording Server goes down, backup recording immediately kicks in:

- 1 The camera will start to automatically record to its internal storage.
- 2 When the Command Recording Server comes back online, the video is transferred back to it, from the camera's internal storage
- 3 That "missing" video and audio are reintegrated into the recorded video in the exact appropriate spot.



Select the Command solution that's right for you

Features	Command Recording Software Lite	Command Recording Software
Maximum Number of Cameras	6	128
Video Retention Time	Maximum 7 days	Unlimited
Maximum Number of Concurrent Connections	32	64
Device Discovery	•	•
ONVIF S and Third-Party Camera Support	•	•
Megapixel/HD Video Support	•	•
System Configuration and Management	•	•
Video Export (MP4, CME)	•	•
Edge Recording (March Networks Shadow Archiving™)	•	•
Motion Recording (Camera Dependent)	•	•
Alarms and Switches		•
Text Insertion		•
Custom Conditions		•
Import/Export Configuration		•
LDAP		•
Redundancy		•

Frequently Asked Questions

Do I need to install a client application to access Command Recording Software Lite?

Yes, you will need to install Command Client, a standalone application that allows you to access live and archived video from Command Recording Software Lite. The Command Client installer is provided in the installation package. For the updated system requirements for Command Client, please visit marchnetworks.com/system-requirements/. To connect to Command Recording Software Lite, type the IP address or host name of its server or machine in the Command Client login page.

What is the default username and password?

The default credentials for accessing the software are:

Username: **admin**

Password: **<blank>**

Which ports is Command Recording Software Lite using?

It uses ports TCP 80, TCP 443, TCP 4505 and UDP 49444. If any of these ports is blocked or in use by other applications, you might experience problems when connecting to or using Command Recording Software Lite.

Can I upgrade from this free trial version to the regular Command Recording Software?

Yes, and without losing any current configuration and storage. For assistance on the upgrade path, please contact one of our [Certified Solution Providers](#)

Can I use the Command Client application to configure Command Recording Software Lite?

No, you can configure Command Lite only by accessing the Command Config interface.

Can I install Command Client on a MAC OS X system?

Command Client is compatible with Windows systems only. MAC OS X-based client workstations are required to virtualize within a Windows environment to use Command Client 2.X.

How many cameras can I connect to Command Lite?

Command Lite supports up to six IP video channels. If you need to connect a higher number of cameras, we offer a convenient upgrade path to accommodate up to 128,000 video.

For how long can I archive video?

Command Recording Software Lite supports up to seven days of recording for each video channel. After seven days, video is automatically deleted.

Why is the software not storing as much video as expected?

Depending on the number of cameras connected, and their bitrate, the disk might not be able to store the expected recording. When the disk is full, older recording will be overwritten.

Are there any limitations in terms of concurrent user connections?

You can create any number of users, each with its own set of rights. The application can accommodate up to 32 simultaneous user connections to the recording server.

What about recording on motion events?

Command Recording Software Lite supports motion-based recording. However, the software itself is not performing the motion analysis and depends on the camera's motion detection capability. The list of motion-capable [IP cameras](#) is available on our web site.

Why is video not playing back smoothly?

The application uses system resources to acquire and record video. Depending on the video stream's size, and other applications that may be running on your computer, the system performance can be affected. Make sure that the minimum system requirements for Command Recording Software Lite are being met.

Why is live video not smooth?

Again, computer(s) running the recording software and/or client software might run short on resources if they do not meet the minimum system requirements, or if multiple applications are running at the same time. For optimum performance, close the other applications.

How do I add cameras to my system?

There are two main ways of adding cameras to your system via the Command Config setup interface:

- Use the integrated network discovery tool to find and add all the supported cameras connected to the same Layer 2 subnet.
- Manually type the camera model, address, and credentials.

How do I get technical support for Command Recording Software Lite?

When you download the software, a Quick Guide and the full User Guide are also provided. Also, online help is available for the Command Client application by selecting the **Help -> Open Online Help** option in the software's main menu.

The Command Recording Software Lite application requires a dedicated server or Virtual Machine. For recommended system requirements, please visit marchnetworks.com/system-requirements/

North America 1 800 563 5564
Latin America +5255 5259 9511
Europe +39 0362 17935
Asia +65 6818 0963
Australia and New Zealand +61 1300 089 419
Middle East and Africa +971 4 399 5525

© 2019 March Networks. All rights reserved. Information in this document is subject to change without notice. MARCH NETWORKS, March Networks Command, March Networks Searchlight, March Networks RideSafe, and the MARCH NETWORKS logo are trademarks of March Networks Corporation. All other trademarks are the property of their respective owners. 060-3120-00-G
marchnetworks.com

